

DYNACO M2 BASIC HIGH PERFORMANCE DOOR



Designed for interior and exterior use

M2 BASIC fast action roll up door has a rapid open/close cycle for smooth traffic flow. Our patented push-pull technology requires little maintenance while downtime is minimized thanks to the self-reinserting door curtain.

M2 BASIC

Designed for up to 100 cycles per day in an interior or exterior environment.

Resists to and operates under pressures up to:

Maximum dimensions: W 12' x H 12'

Width (ft.)	UP TO 7'	8'	9'	10'	11'	12'
Pressure (lbs./sq.ft.)	23.89	20.90	18.58	16.72	15.20	13.93
Wind speed* (mph)	95	90	85	80	75	72.5

*Wind speed is indicative, not including any multiplication coefficients taking into account the configuration of the building.

DESCRIPTION

STANDARD OPERATING SPEED: 24"/sec.

OPERATING TYPE: gear driven, push-pull movement.

SIDE GUIDE made of structural channels of 3 5/16" x 2" x 1/8" in galvanized steel.

INNER SIDE GUIDE in polyethylene (PE-UHMW 1000); outer section 1/2" x 13/16" fixed at the base of the structural channels with springs. This means that the door curtain is stretched between its side guides.

DRUM in steel, diameter 4" x 0.078", shafts in steel.

DOOR CURTAIN in very resistant PVC (27 oz/sq. yd). Available in different colors and provided with side sealing zippers; soft bottom edge design.

MOTOR: 1/2 HP-60 HZ continuous industrial motor. (HP may vary with door size)

MOTOR COVER: optional.

CONTROL CIRCUIT: electronic control board with 5V logic. Options included: B2, E2 wiring, timer to close, mid-stop, delay on reverse, maximum run timer.

OPERATOR manufactured by **MANARAS:** Opera-H-Jackshaft Operator with industrial duty

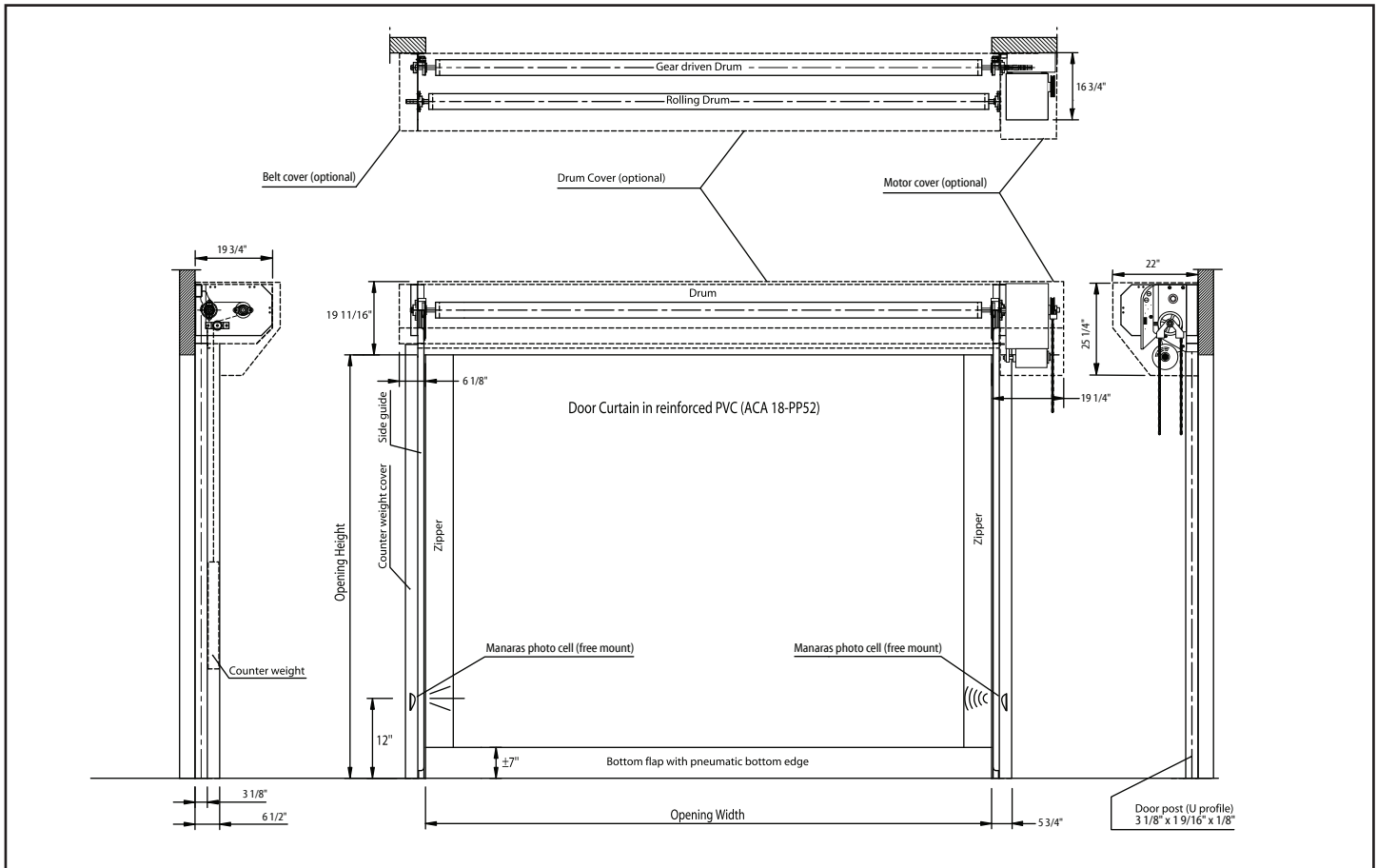
motor for up to 25 cycles/hour or 100 cycles/day. Electronic control board supplied with floor level disconnect for manual operation.

DETECTORS: An infrared photocell, detecting the presence of a pedestrian or a vehicle, immediately opens the door and keeps it open as long as the presence is detected. Height of the photocell: 12" from the floor (optionally up to maximum 24" upon request). A bottom edge detector opens the door when it hits an obstacle during the closing cycle. This detector is positioned in the bottom part of the curtain.

POWER SUPPLY: Standard: 115 VAC. Optional single phase 208-230 VAC, three phase 208 VAC, three phase 460 VAC, three phase 575 VAC.

Frequency: 60 Hz. Circuit protection to be provided by the customer: 8A for 115/1/60, 4A for 230/1/60, 2.1A for 208/3/60, 1A for 460/3/60, 0.8A for 575/3/60.

SPACE REQUIREMENTS: All indicated dimensions are net: the space necessary for mounting and maintenance has to be provided. Reduced dimensions: upon request.



Within the framework of its policy of continuous development of its products, DYNACO reserves the right to modify the characteristics of its products and parts without prior notice.

The Dynaco products are protected by worldwide registered patents. As part of its policy of continuous product development, Dynaco reserves the right to change the characteristics of its products or components without prior notice. Disclaimers: For a correct use of our products, please refer to our manual. Everything that is mentioned in this brochure is only valid under the terms of use in the user manual and on condition that the door was properly installed and maintained and has not undergone abuse nor neglect.

© ASSA ABLÖY. All rights reserved. Technical data subject to change without notice. Part of ASSA ABLÖY.

